

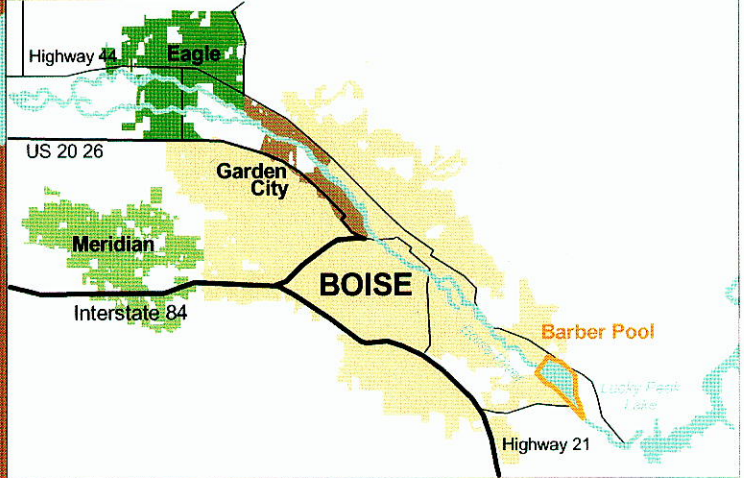
Study Area Boundary 


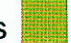





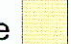



Sources: Community Planning Association of Southwest Idaho (COMPASS), Meridian, Idaho  
taken from digital orthophotography, 2001



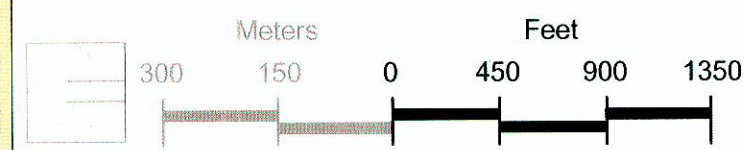
# Barber Pool Conservation Area BASE MAP





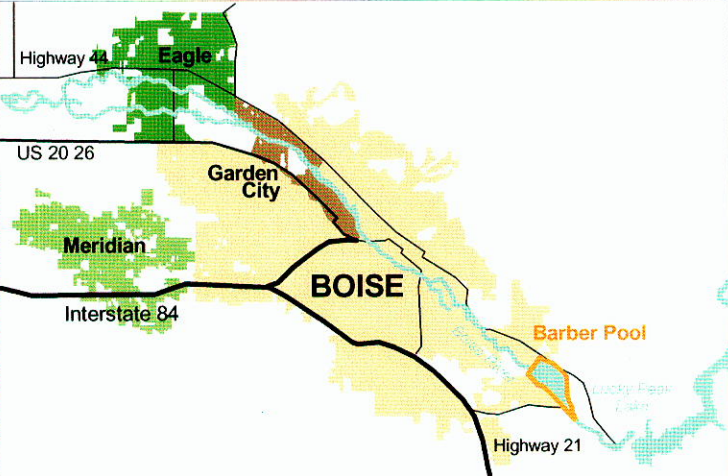
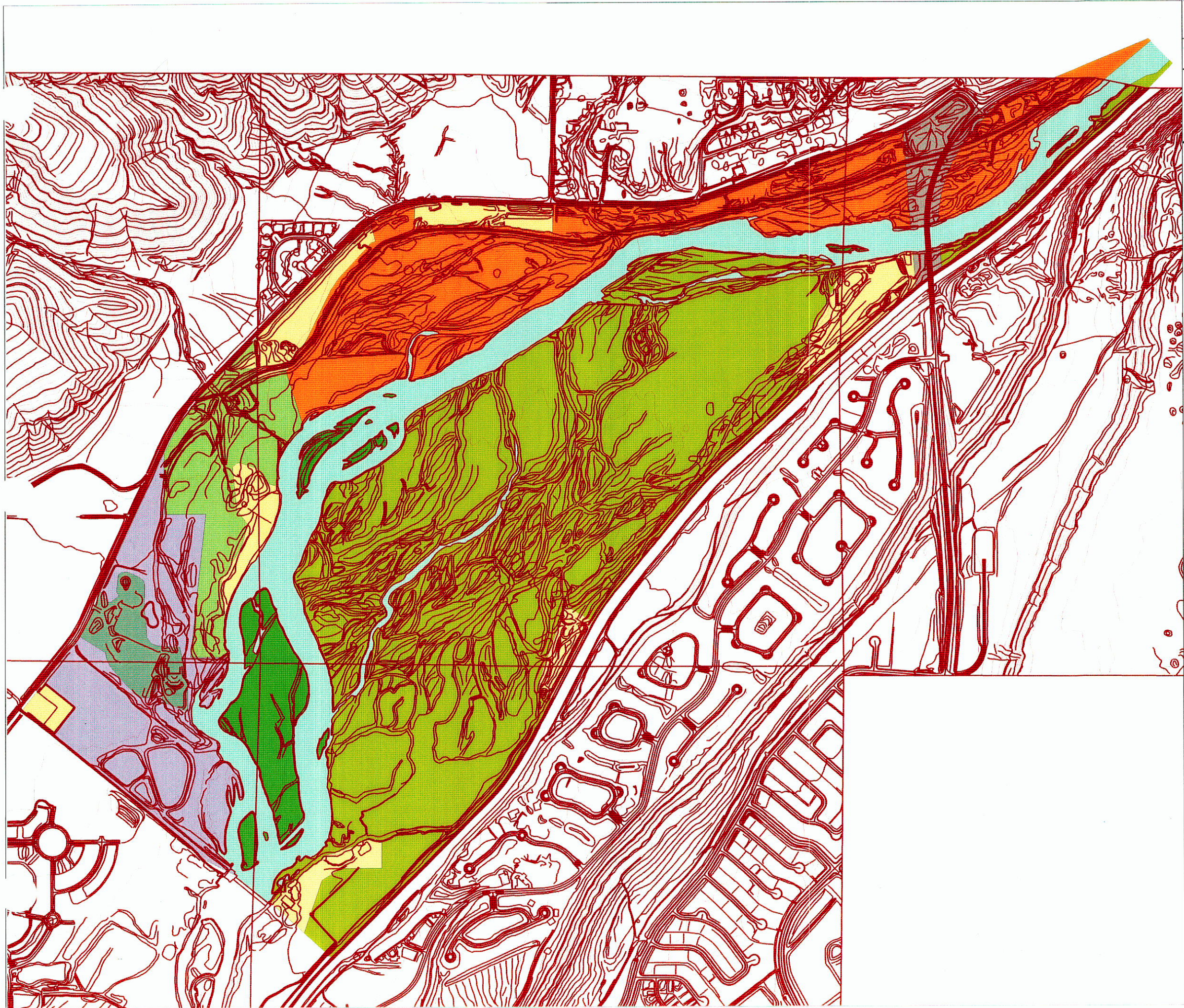
- Study Area Boundary 
- Idaho Foundation for Parks and Lands 
- Idaho Shakespeare Festival 
- Ada County 
- City of Boise 
- Idaho Department of Fish and Game 
- Idaho Department of Parks and Recreation 
- Idaho Department of Transportation 
- Private 
- Federal 
- Water 

Sources: Community Planning Association of Southwest Idaho (COMPASS), Meridian, Idaho  
taken from digital orthophotography, 2001



# Barber Pool Conservation Area LAND OWNERSHIP





- Study Area Boundary
- 10 Foot Contour Lines
- 50 Foot Contour Lines
- Administration
- Boise River
- Gregerson
- Infrastructure
- New York
- Northern Buffer
- Penitentiary
- Private
- River Islands

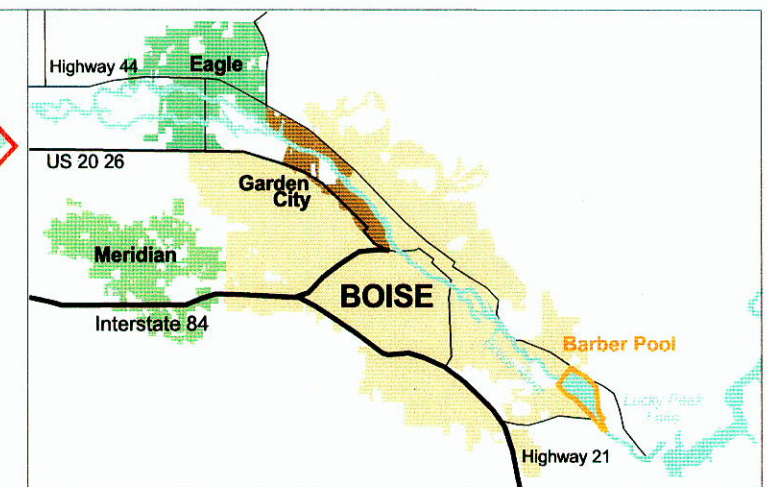
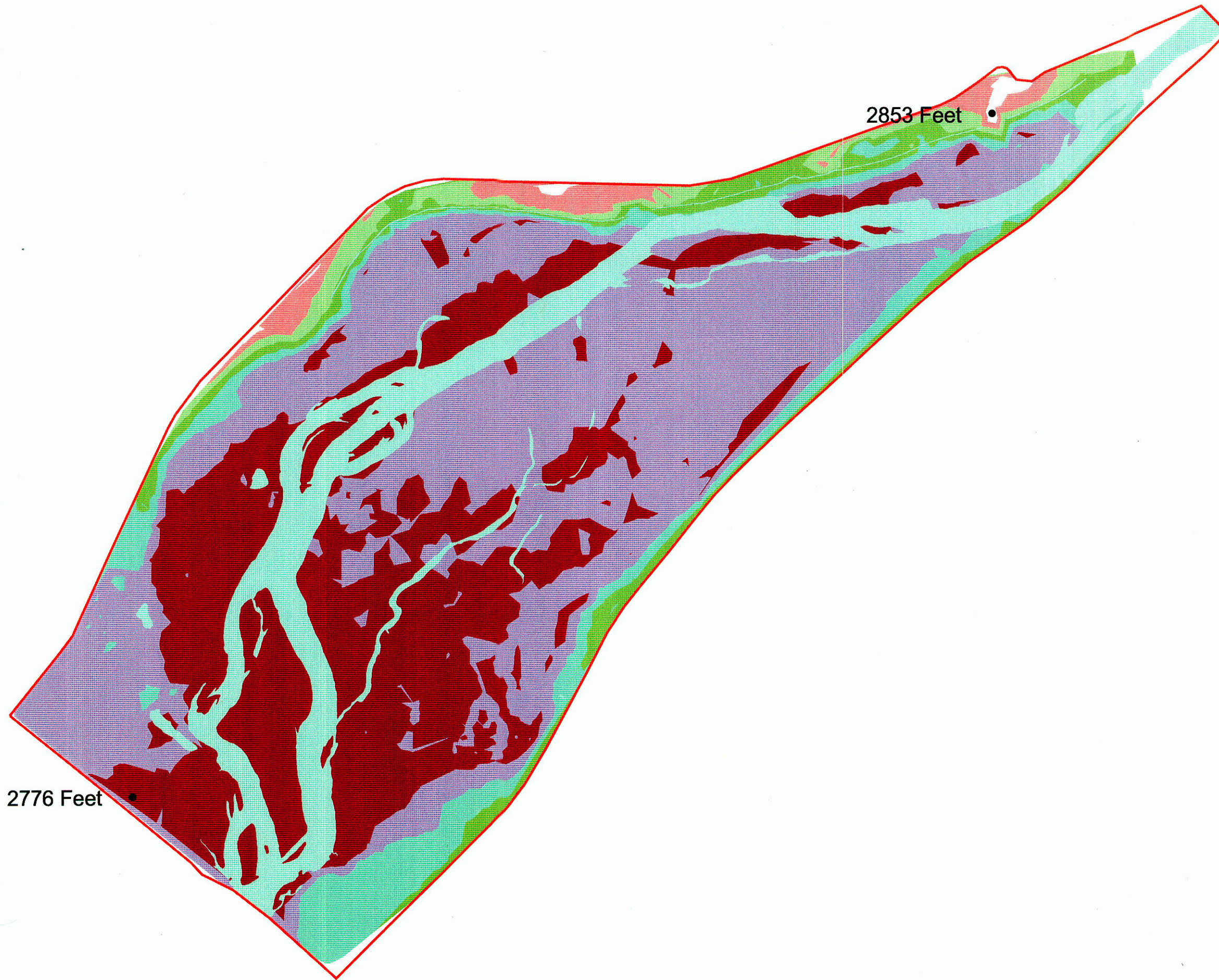
Sources: Community Planning Association of Southwest Idaho (COMPASS), Meridian, Idaho taken from digital orthophotography



Barber Pool Conservation Area

# TOPOGRAPHY





Study Area Boundary 


Boise River 

Altitude in Feet

High Point - 2853 Feet •


2842 - 2853 

2831 - 2842 

2820 - 2831 

2809 - 2820 

2798 - 2809 

2787 - 2798 

2776 - 2787 

Low Point - 2776 Feet •

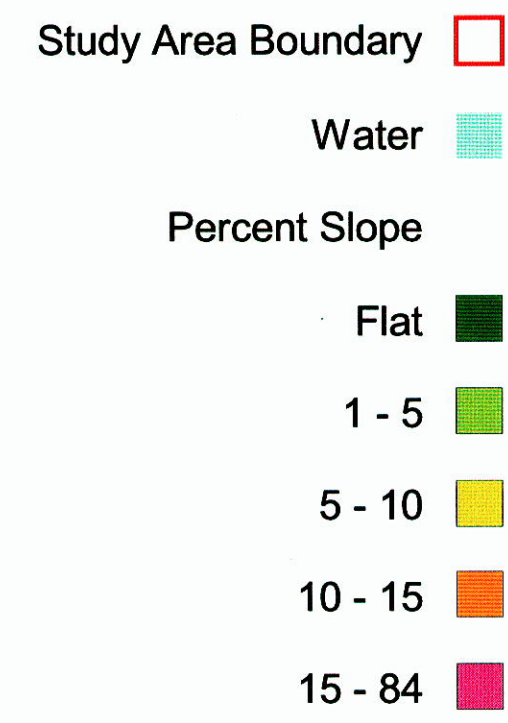
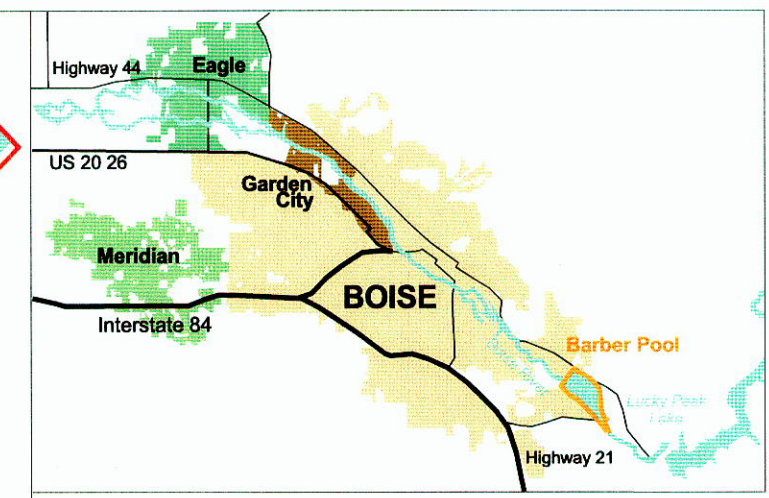
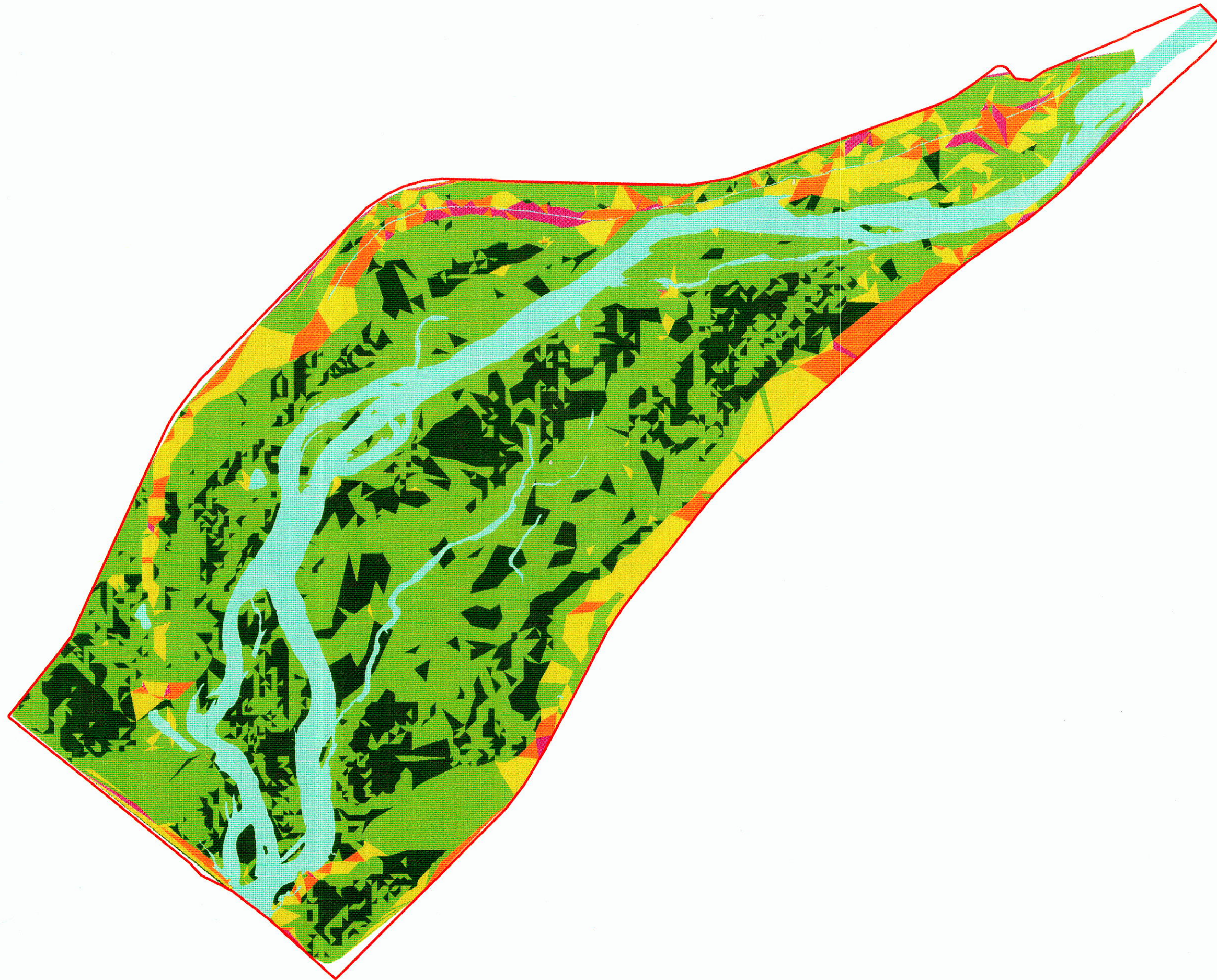
Sources: Community Planning Association of Southwest Idaho (COMPASS), Meridian, Idaho taken from digital orthophotography, 2001



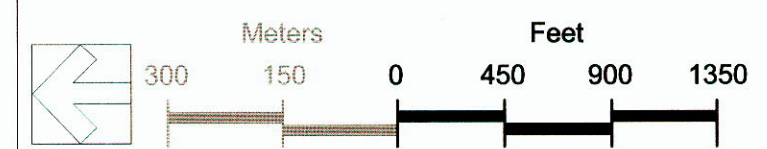
**Barber Pool Conservation Area**

**ELEVATION**





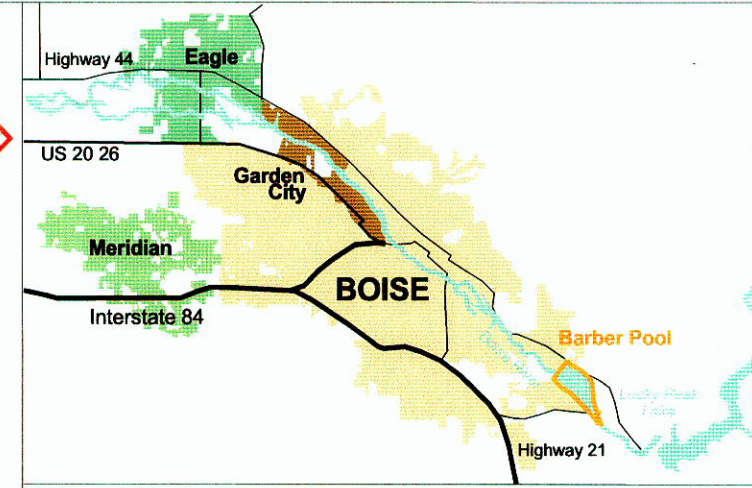
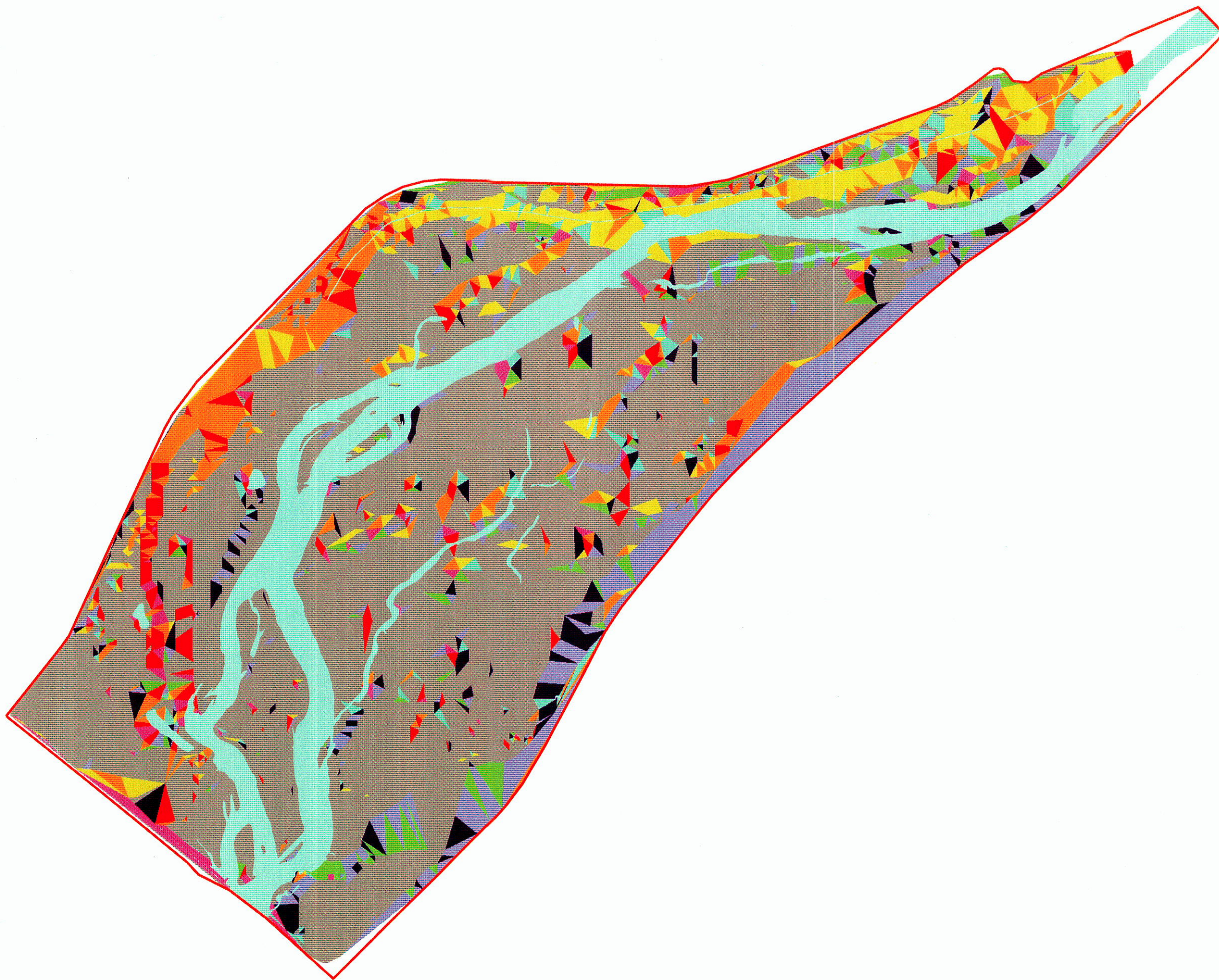
Sources: Community Planning Association of Southwest Idaho (COMPASS), Meridian, Idaho  
taken from digital orthophotography, 2001





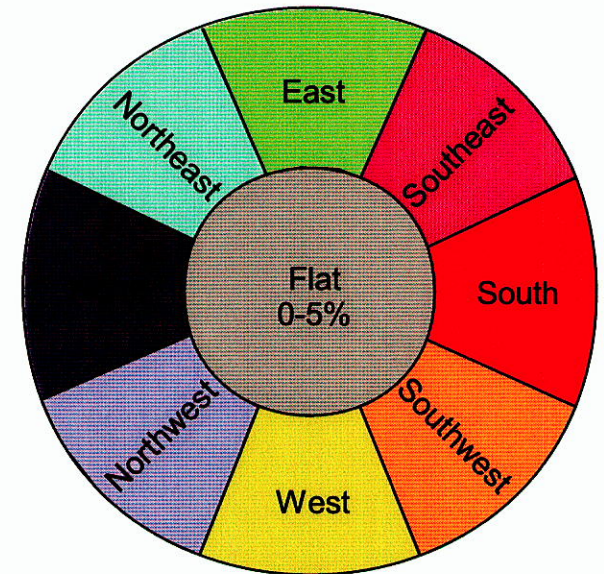
# Barber Pool Conservation Area

## SLOPE

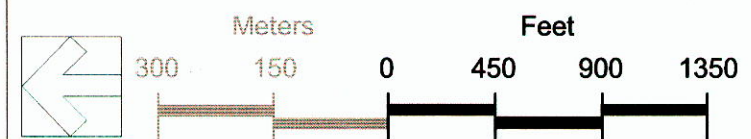




Study Area Boundary   
 Water 



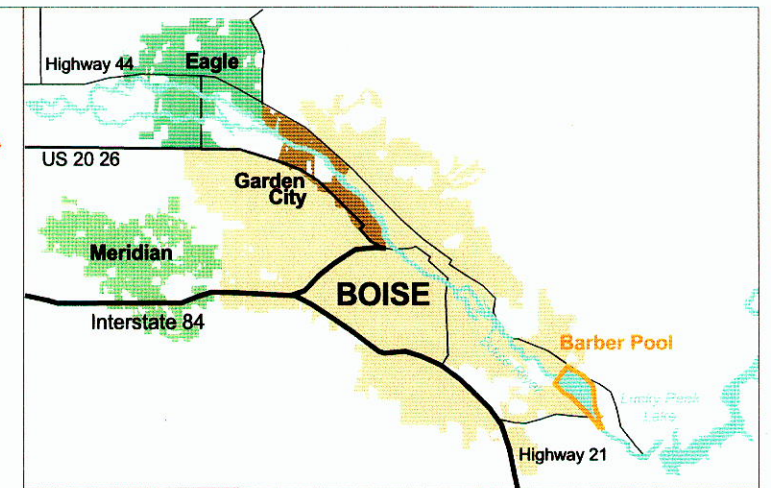
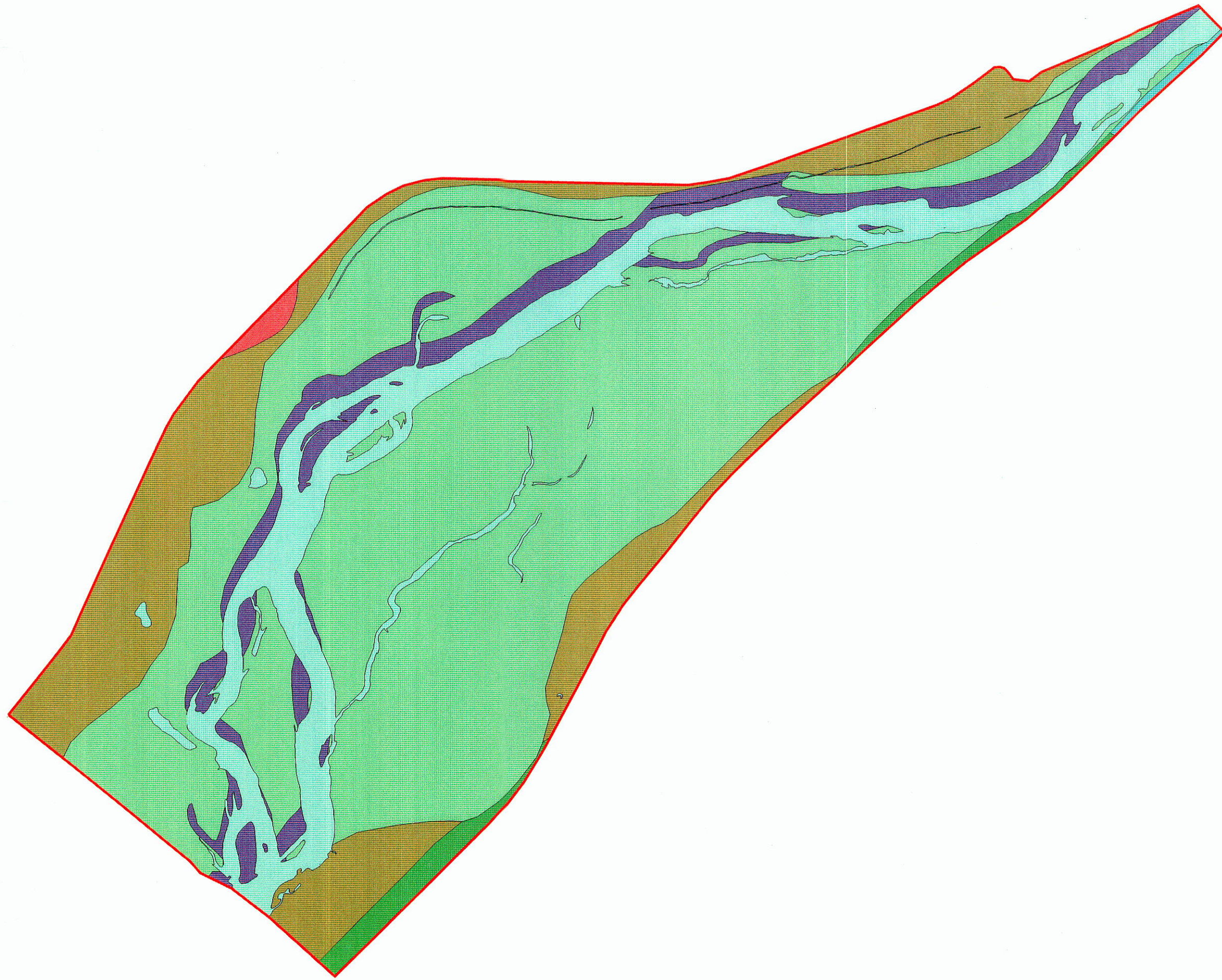
Sources: Community Planning Association of Southwest Idaho (COMPASS), Meridian, Idaho  
 taken from digital orthophotography, 2001



# Barber Pool Conservation Area

# ASPECT





Study Area Boundary 

Alluvial Fan Gravel 

Alluvium of Boise and Snake River 

Gravel of the Boise Terrace 

Gravel of the Whitney Terrace 

Talus Deposits 

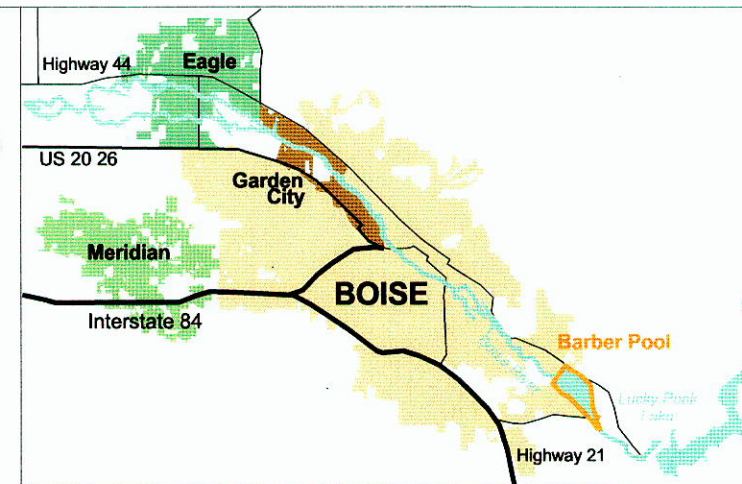
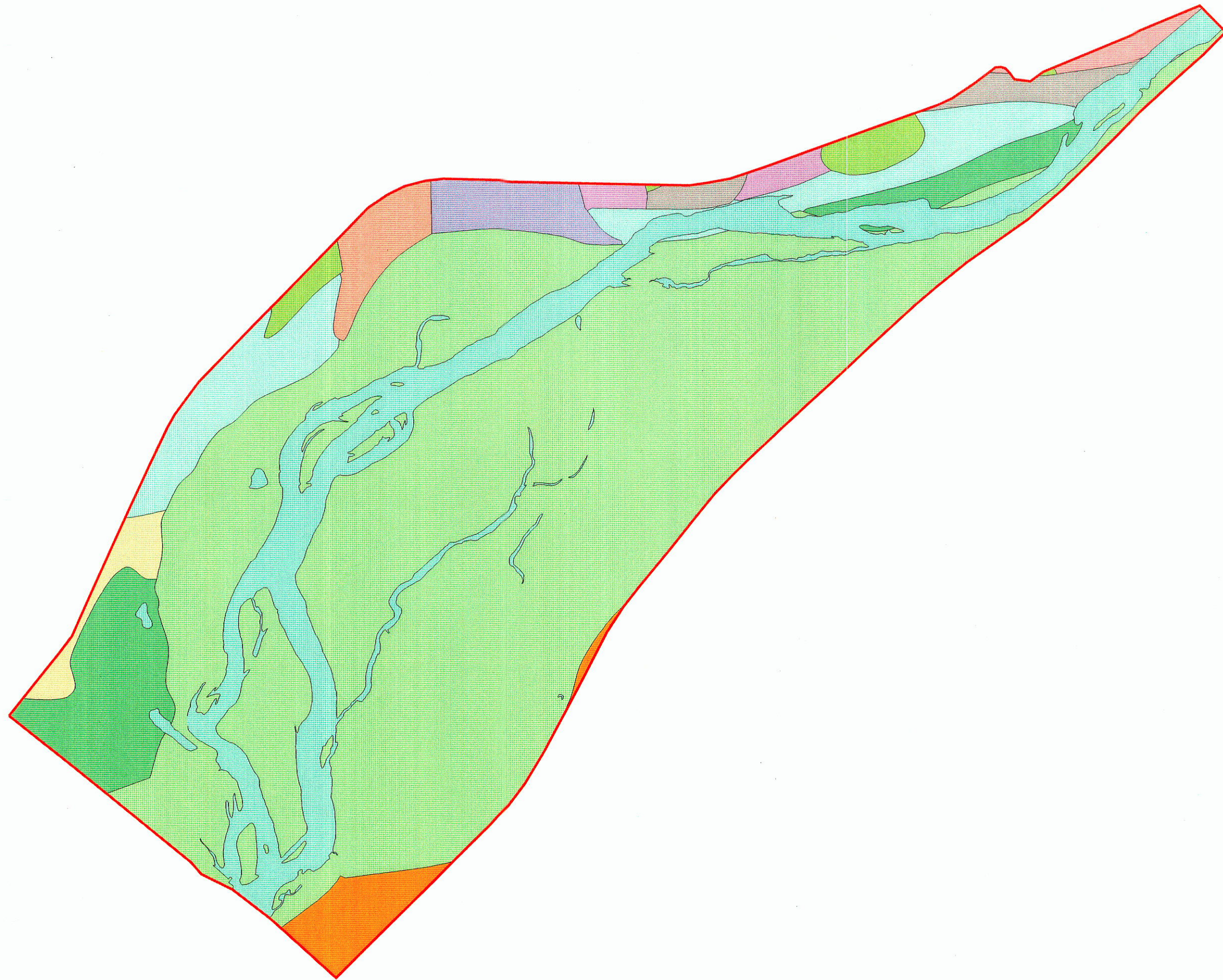
Water 

Sources: Kurt L. Othberg and Loudon R. Stanford,  
*Digital Geologic Map of the Boise Valley and Adjoining  
 Area, Western Snake River Plain, Idaho,*  
*Idaho Geological Survey Technical Report 93-3*  
 Moscow, Idaho



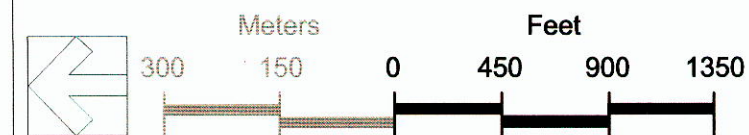
# Barber Pool Conservation Area GEOLOGIC FORMATIONS





- Study Area Boundary
- Aridic Argixerolls
- Carwalker Notus Complex
- Flofeather Sandy Loam
- Flofeather Sandy Loam 3% to 8% Slope
- Flofeather Urban Land Complex
- Haw Loam
- Haw Loam 2 % to 4 %Slope
- Haw Urban Land Complex
- Moulton Fine Sandy Loam
- Shawmount Sandy Loam
- Tindahay Fine Sandy Loam
- Boise River

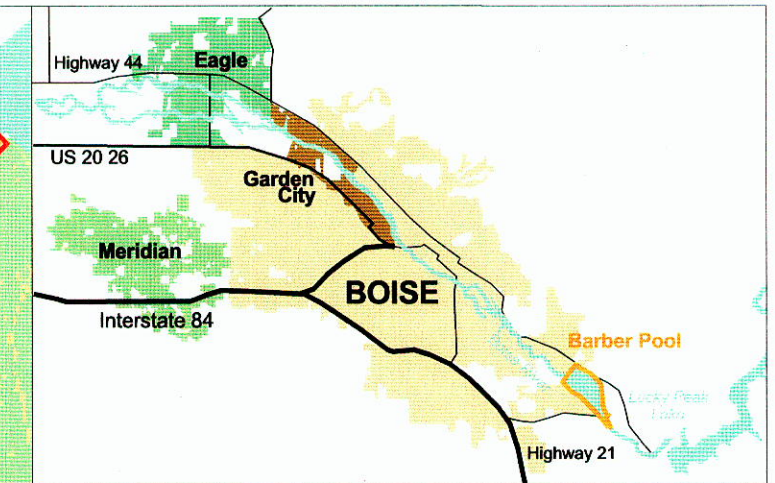
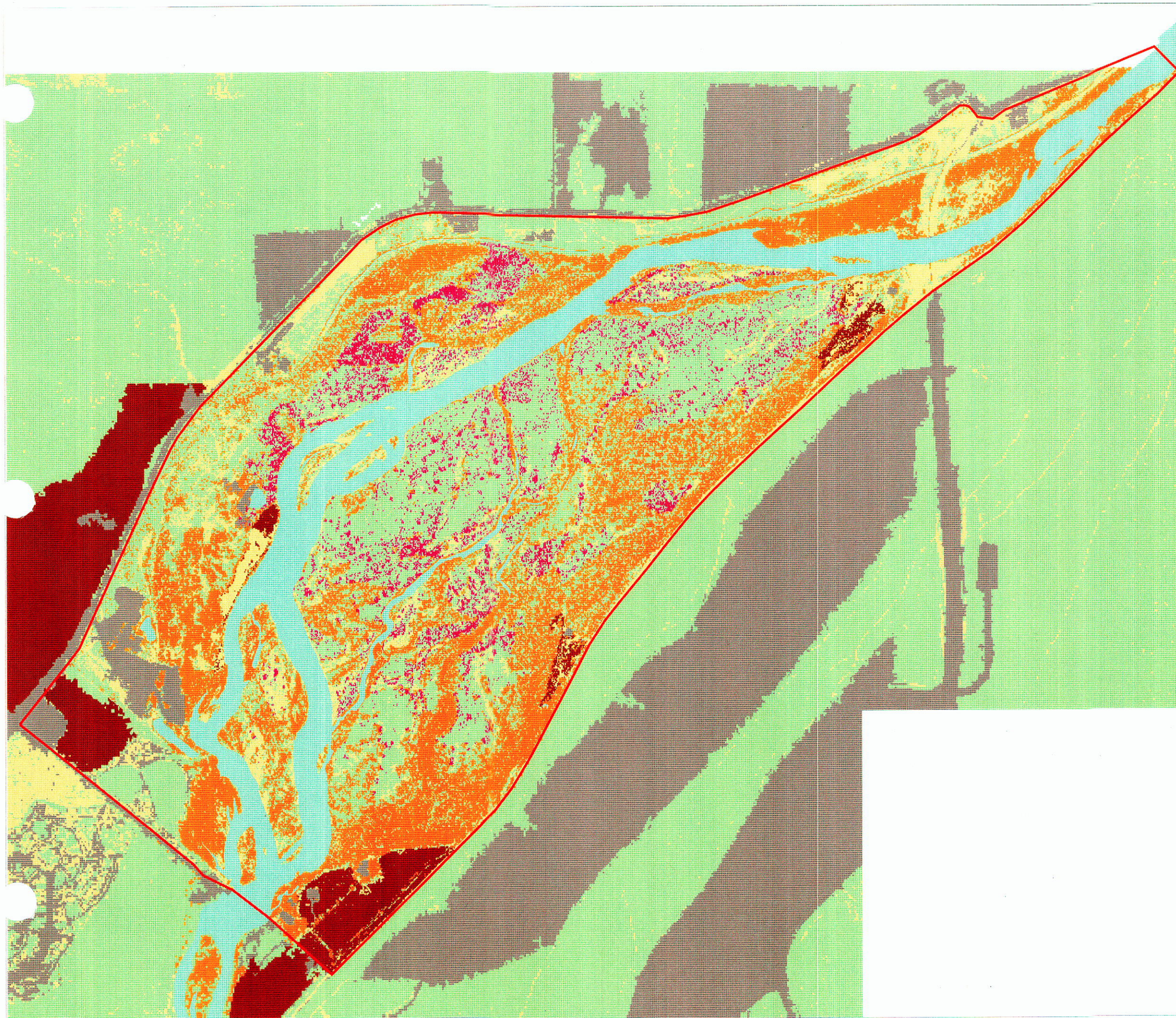
Sources: Natural Resources Conservation Service (NRCS)  
US Dept. of Agriculture, 2001



## Barber Pool Conservation Area

# SOILS



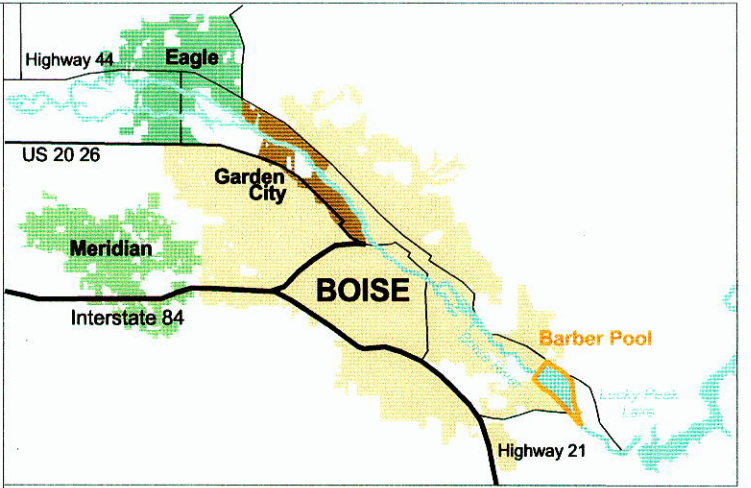


- Study Area Boundary
- Important Habitat at Risk
- Important Habitat
- Natural Character
- Undeveloped-Barren
- Developed-Agriculture
- Developed-Building
- Boise River

Sources: Community Planning Association of Southwest Idaho (COMPASS), Meridian, Idaho  
taken from digital orthophotography, 2001

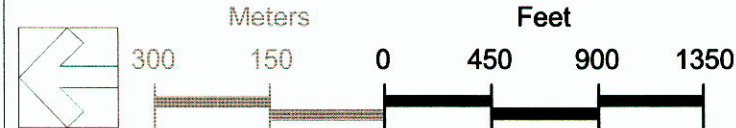






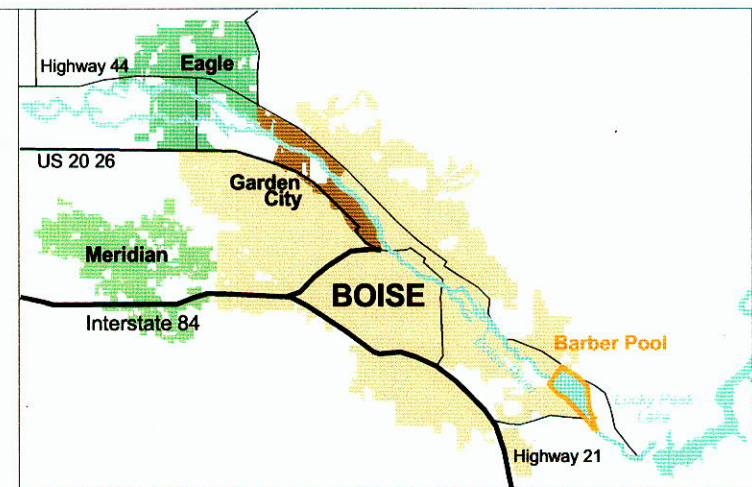
Study Area Boundary   
Water 

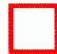
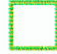

Sources: Community Planning Association of Southwest Idaho (COMPASS), Meridian Idaho taken from digital orthophotography, 2001



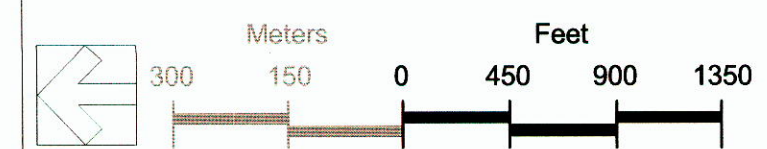
**Barber Pool Conservation Area**  
**PRESENT**  
**SHORELINE**





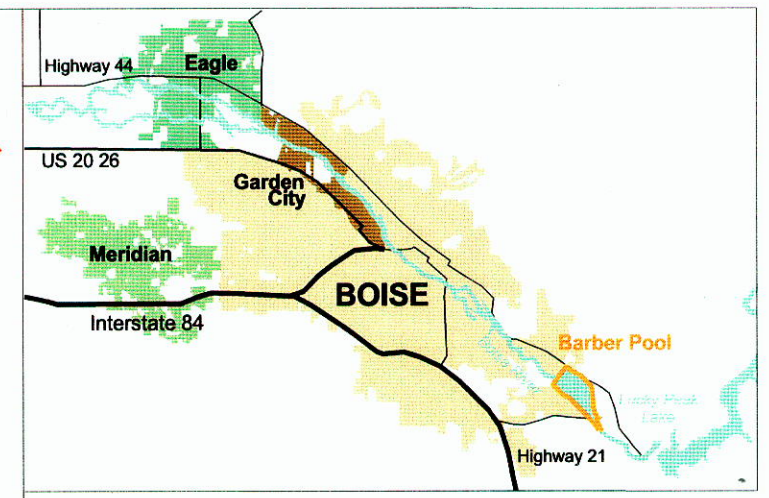
- Study Area Boundary 
- 1867 Shoreline 
- Present Shoreline 




Sources: Map produced by Idaho Water Resources  
1867 Cadastral Survey



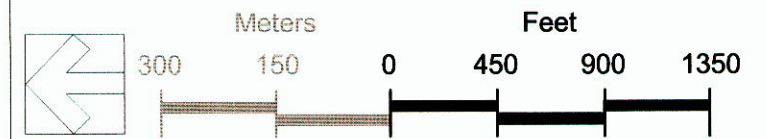
# Barber Pool Conservation Area 1867 SHORELINE





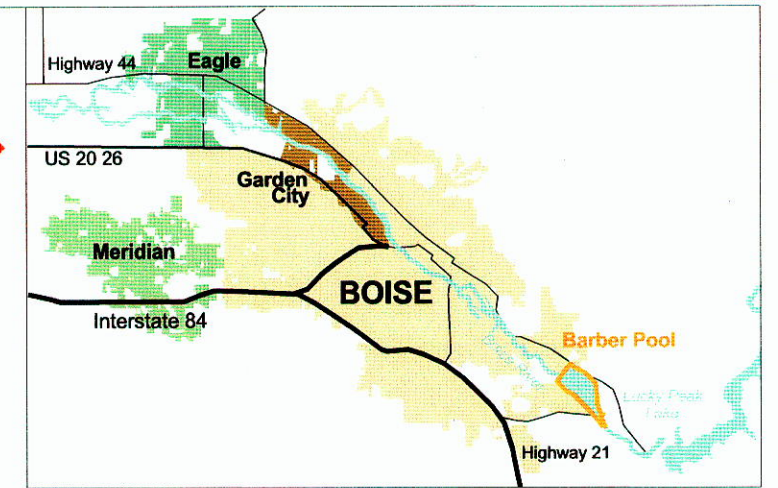
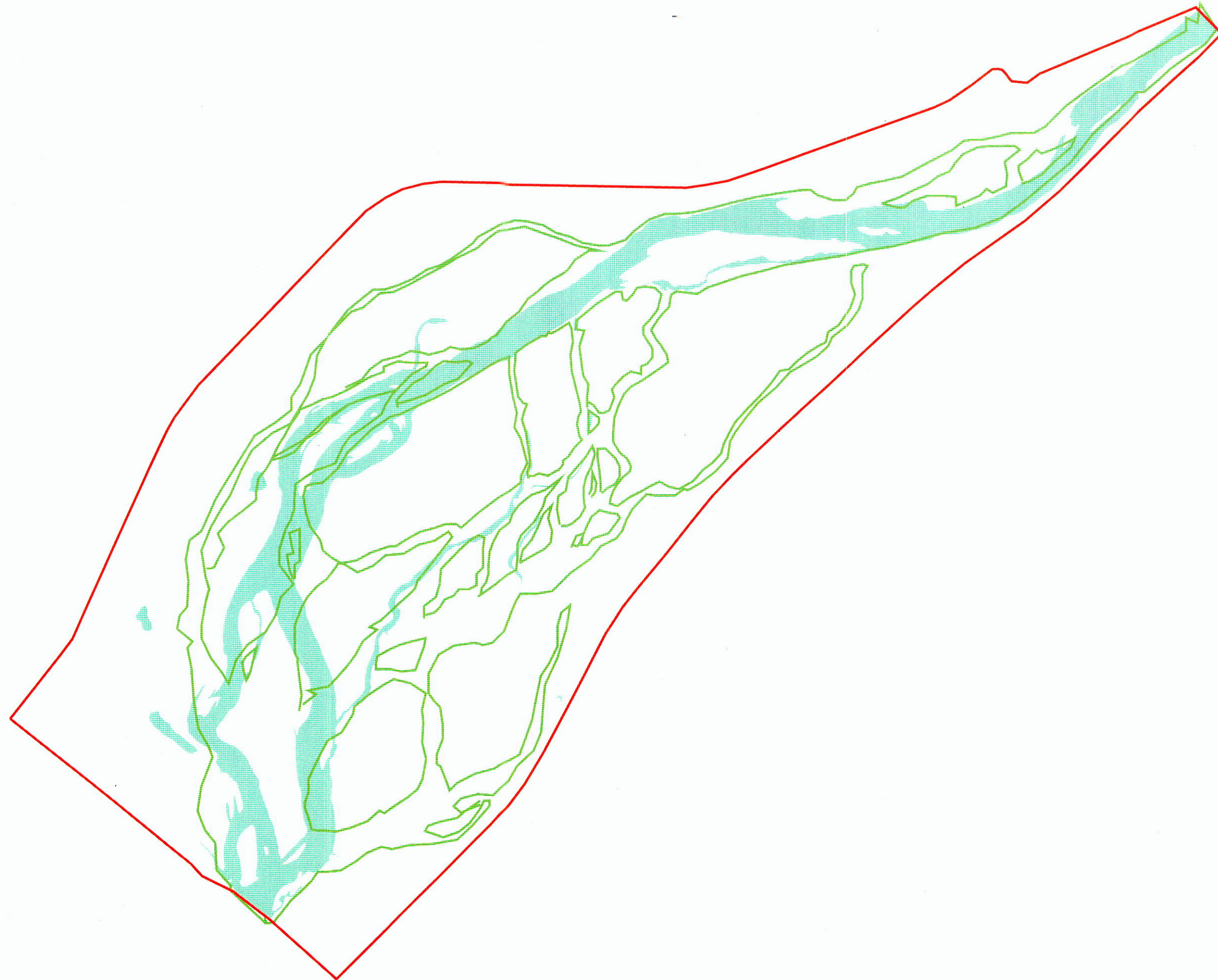
- Study Area Boundary 
- 1921 Shoreline 
- Present Shoreline 

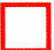


Sources Map of Upper New York Subdivision,  
Department of the Interior,  
US Reclamation Service, June 1921



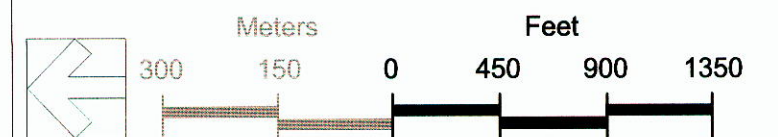
**Barber Pool Conservation Area**  
**1921**  
**SHORELINE**





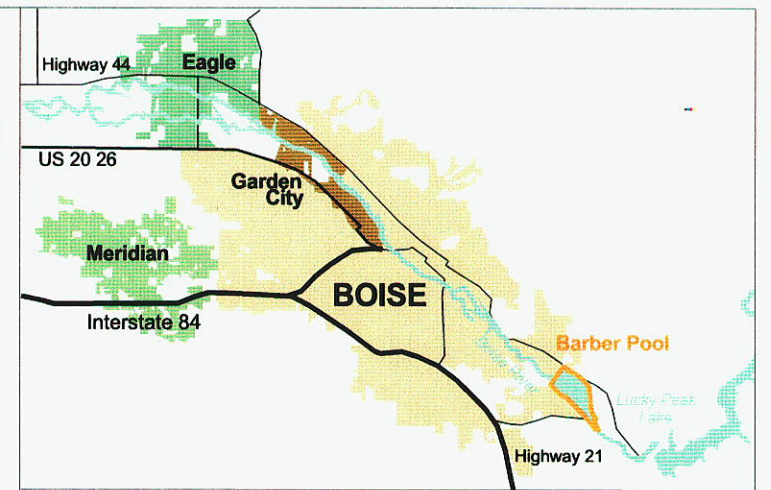
- Study Area Boundary 
- 1939 Shoreline 
- Present Shoreline 




Sources: Natural Resources Conservation Services (NRCS),  
US Department of Agriculture, 1939



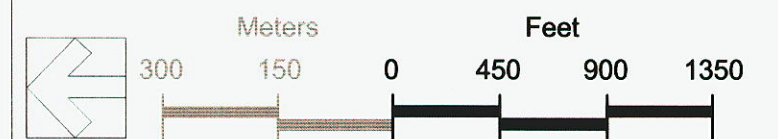
**Barber Pool Conservation Area**  
**1939**  
**SHORELINE**





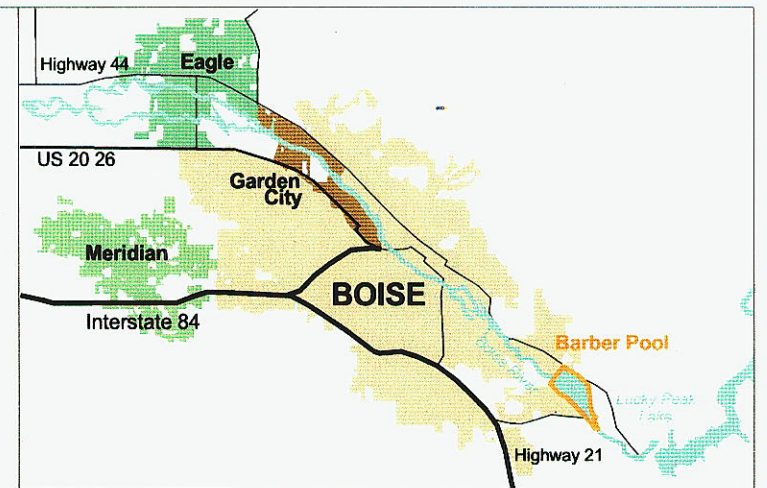
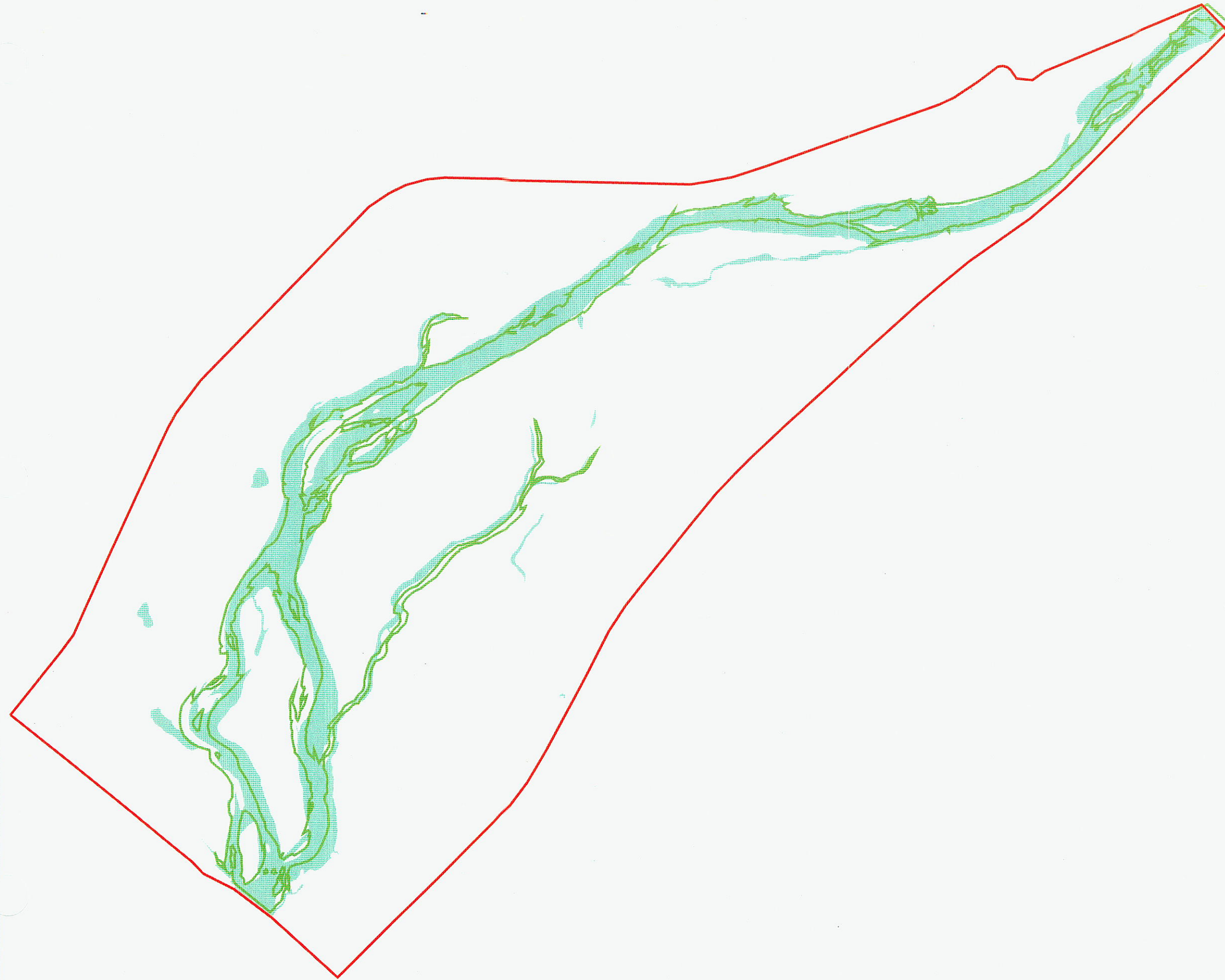
- Study Area Boundary 
- 1950 Shoreline 
- Present Shoreline 




Sources: US Army Corps of Engineers  
Aerial Photography, 1950



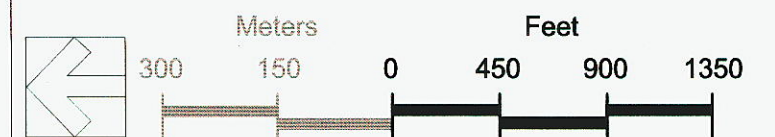
**Barber Pool Conservation Area**  
**1950**  
**SHORELINE**





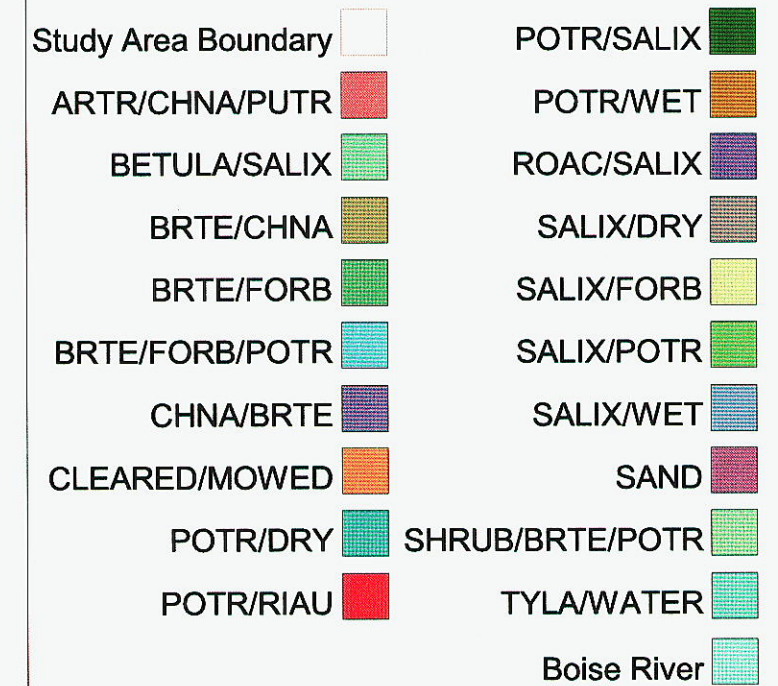
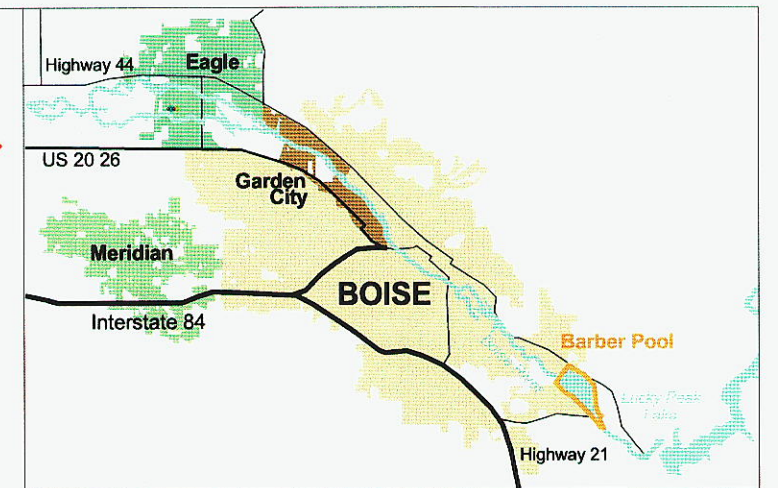
- Study Area Boundary 
- 1972 Shoreline 
- Present Shoreline 

Sources: US Army Corps of Engineers  
Aerial Photography, 1972

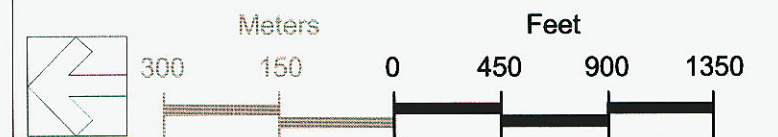


**Barber Pool Conservation Area**  
**1972**  
**SHORELINE**



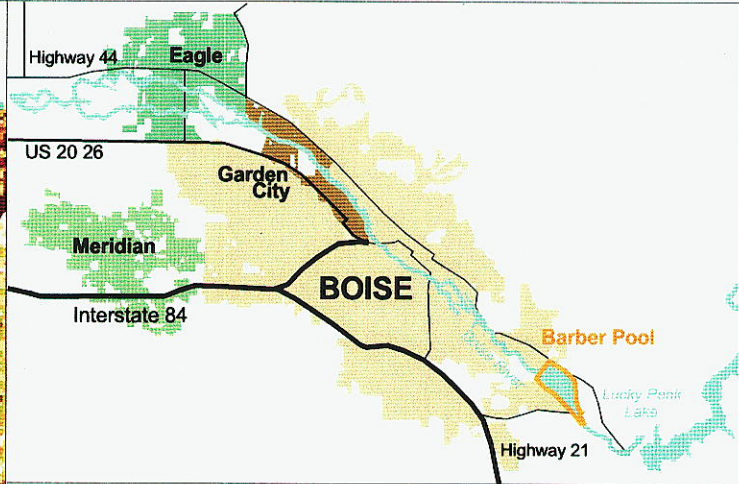


Sources: Idaho Conservation Database Center,  
Plant Communities, Field Checked  
May, 2001



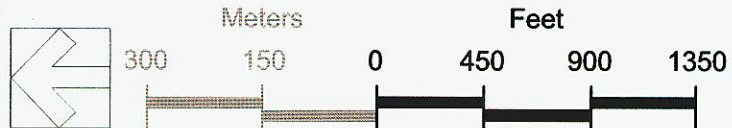
# Barber Pool Conservation Area **VEGETATIVE COMMUNITY**





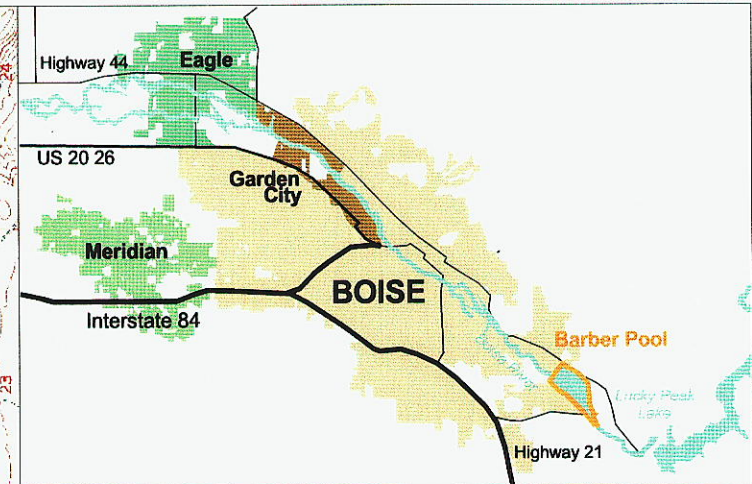
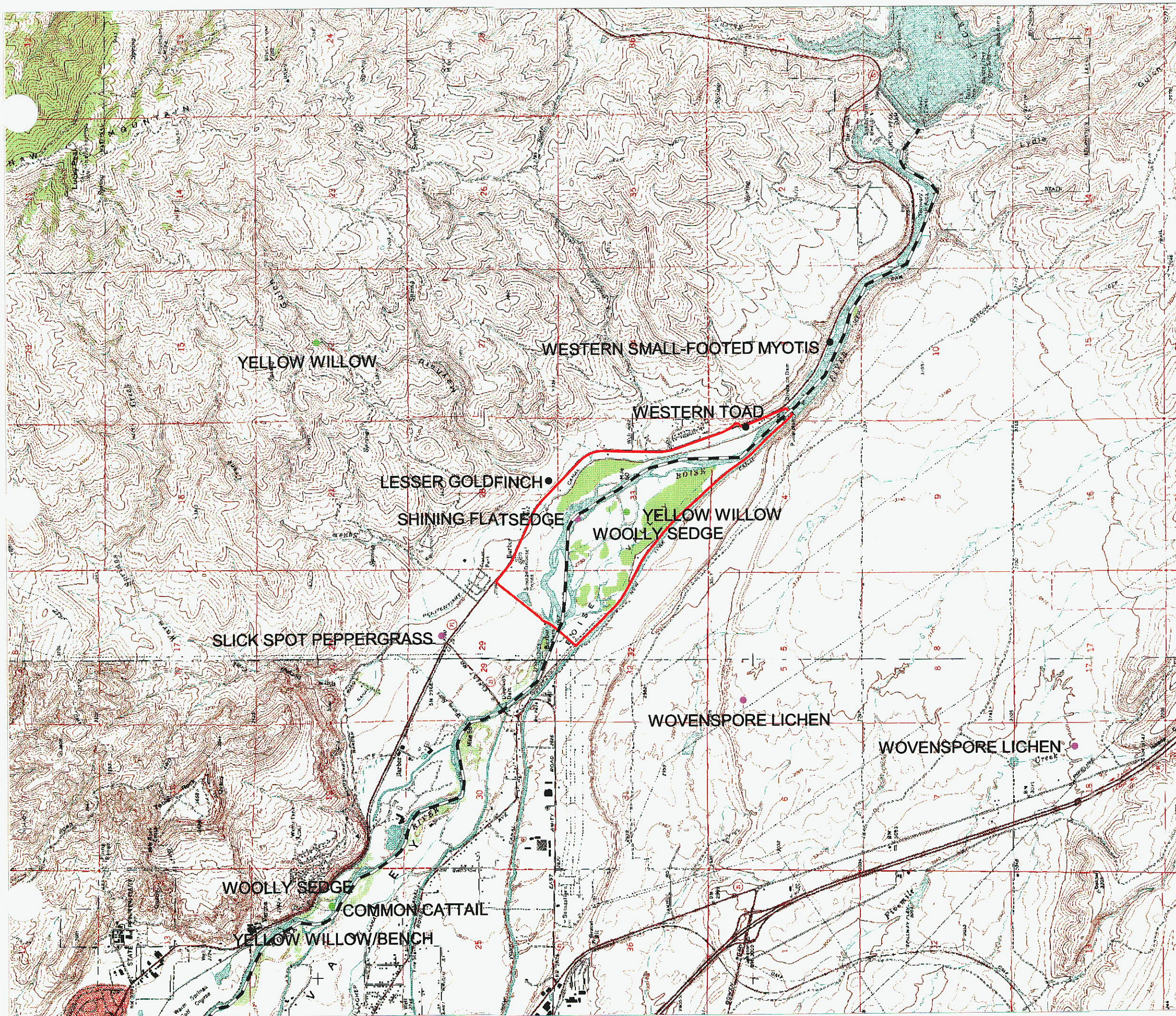
|                      |                      |
|----------------------|----------------------|
| Annual Grass         | Heavy Shrub          |
| Bare Ground          | Residential          |
| Bare Ground/Pavement | Shadow/Heavy Shrub   |
| Building/Pavement    | Shadow/Talus/Juniper |
| Cottonwood/Willow    | Shallow Water        |
| Cropland             | Shrub/Grass          |
| Deep Water           | Wet Soil/Heavy Grass |
| Grass/Shrub          | Willow/Heavy Grass   |
| Heavy Grass/Shrub    | Willow/Cottonwood    |
|                      | Study Area Boundary  |

Sources: Idaho Conservation Database Center,  
Community Planning Association of Southwest Idaho  
(COMPASS), Meridian, Idaho  
Supervised Image Analyst classification  
from digital orthophotography, 2001

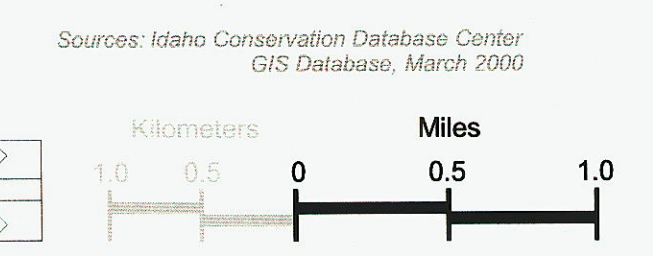


# Barber Pool Conservation Area VEGETATION COVER TYPES

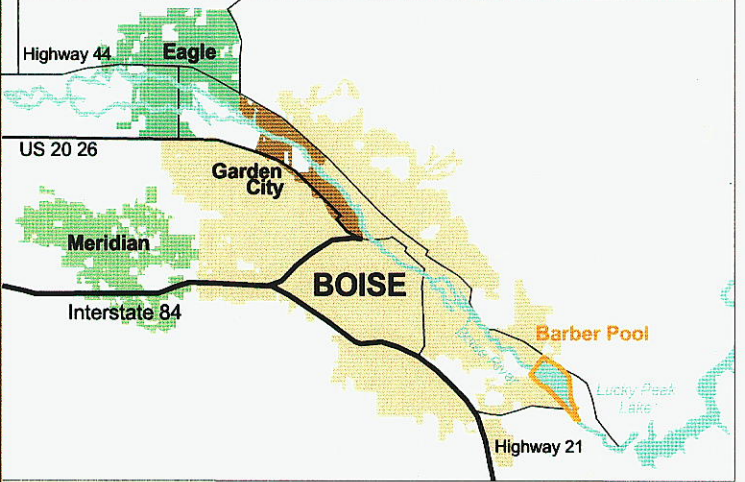




- Study Area Boundary 
- Bald Eagle Wintering 
- Sensitive Plant Communities 
- Sensitive Animals 
- Sensitive Plants 

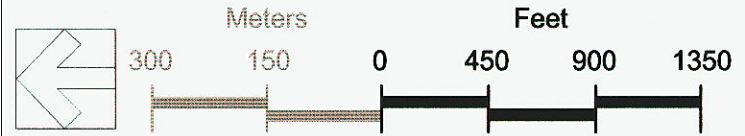






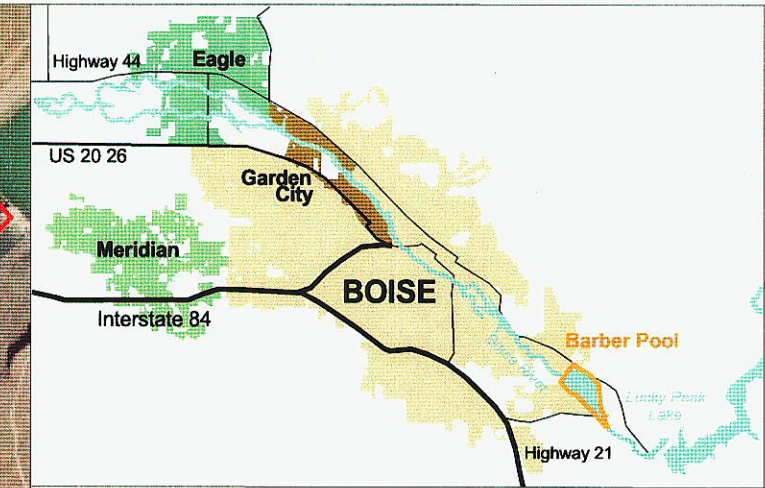
- Study Area Boundary 
- Canada Goose 
- Lewis' Woodpecker 




Sources: US Army Corps of Engineers  
Field Inventory, May 2001



Barber Pool Conservation Area  
**NESTING  
AREAS**





- Study Area Boundary 
- Primary Mule Deer Migration Routes to Barber Pool 
- Secondary Mule Deer Migration Routes to Barber Pool 
- Tertiary Mule Deer Migration Routes to Barber Pool 