

Collaboration



Collaboration with individuals, adjacent landowners, businesses, and local governments is key to the success of a Barber Pool Conservation Area Master Plan. Every organization with a footprint in Barber Pool is committed to working together for the whole, which is critical to our mutual long-term success.

To learn more please go to <https://idaholands.org/barber-pool>

WITH THANKS TO OUR PARTNERS DURING THE FIRST PART OF OUR MASTER PLAN JOURNEY



Enhancing the Barber Pool: Planning the future



There's a hidden treasure in the Barber Valley located in Southeast Boise. The Barber Pool Conservation Area (BPCA) is a wildlife refuge teeming with more than 300 native species. It covers more than 700 acres along the Boise River, roughly between the Harris Ranch development and the Highway 21 Bridge. The Pool includes a large amount of riparian habitat, so rare, and precious in the arid West. However, that valuable habitat is in a long-term, downward trend.

Today, the Barber Pool isn't quite as hidden as it once was. Among the remnants of its industrial heritage are education centers, arts organizations, government offices, as well as many new private residents who cluster in and around its 120-year old shores, bringing new life, new opportunities for stewardship, and new challenges.

Since the Pool was gifted by Boise Cascade Corporation over four decades ago to the Idaho Foundation for Parks and Lands, several non-profit organizations, businesses, and local government agencies have worked together to safeguard and improve this critical home for wildlife. It is time to take our combined efforts to the next level by creating a unifying Master Plan, before the place is overwhelmed by competing priorities in such a limited area.

The Idaho Foundation for Parks and Lands, along with several other landowners in and around the Barber Pool area, have laid the groundwork for a Master Plan that creates a base for preservation and management for generations to come.

“ The BPCA is a place of tremendous significance to wildlife, conservationists, and the scientific community.”

– US Army Corps of Engineers

Protecting and improving BPCA's environment and wildlife

BPCA needs your help to achieve our protection and enhancement goals



Increase diversity
of plants and
pollinators.



Enhance the habitat
to support native
wildlife populations.

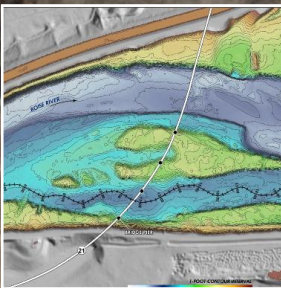


Protect and restore
healthy cottonwood
stands to support
Bald Eagles and other
wildlife.



Add areas for human
interaction with
nature, such as paths
and viewing areas,
while controlling
access to safeguard
the habitat necessary
for wildlife.

Enhance the diversity and habitat quality of the
site. We will work with scientists, engineers, and
land managers to examine the existing river and
floodplain for opportunities to support native plant
growth, remove invasive species, and promote
long-term, healthy habitat.



Provide ecological
enhancement for at
risk species, such
as the yellow-billed
cuckoo.



Reverse the decline of riparian vegetation. This
former, high-flow channel was formed when
Barber Dam was 8 to 9 feet higher than it is today.
The bottom of the channel is above the summer
groundwater level. While a few trees are still alive,
no young trees or riparian shrubs are able to reach
the groundwater and thrive. Nearly 2 miles of similar,
old channels in the Barber Pool hold declining
cottonwoods that are not being replaced.



Foster healthy, self-sustaining riparian vegetation. This active, high-flow
channel is located approximately 400 feet away from the location of the
first photo above. The channel bottom intercepts groundwater in several
places, forming standing pools of water. During spring runoff, water flows
and supports live cottonwoods of various ages, willows, and other riparian
shrubs. Deepening the old, degraded channels to within a few feet of
groundwater--followed by planting cottonwoods and willows--would
allow the former channels to again support healthy, self-sustaining riparian
communities that are the essence of the Barber Pool for wildlife.



0.5 Miles